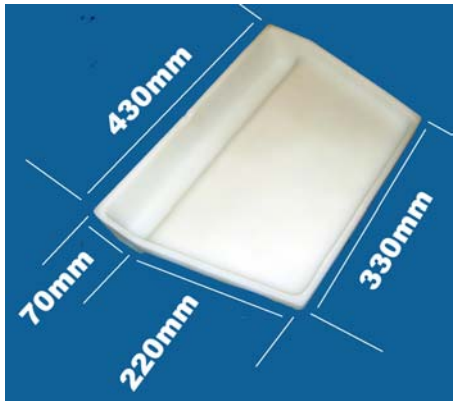
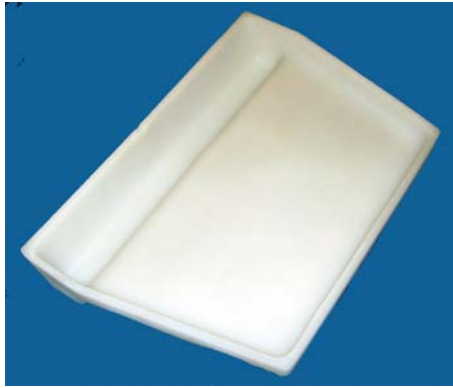


Small cutting board only



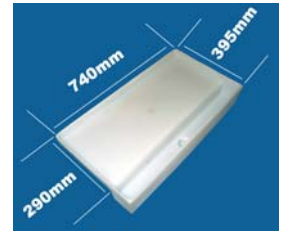
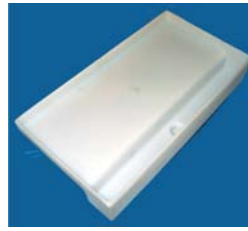
LA8025 - Small white cutting board only

Small cutting board including mount



LA8030 - Small white cutting board including 32mm alloy shaft.

Large cutting board only



LA8035 - Large cutting board only

Large cutting board with 32mm alloy legs



LA8036 - Large cutting board

- with adjustable stainless mounting bracket
- adjustable in 5 positions
- holes to attach tubes for rod holders
- Stainless steel nuts and bolts
- 600mm 32mm alloy mounting posts, with taper spacers

Large cutting board with 32mm adjustable alloy legs



LA8037 - Large cutting board

- with adjustable stainless mounting bracket
- adjustable in 5 positions
- holes to attach tubes for rod holders
- Stainless steel nuts and bolts
- 600mm 32mm alloy mounting posts, with taper spacers

Large cutting board with 38mm stainless legs



LA8039 - Large cutting board

- with adjustable stainless mounting bracket
- adjustable in 5 positions
- holes to attach tubes for rod holders
- Stainless steel nuts and bolts
- 600mm 38mm stainless mounting posts.

Deluxe Cutting Boards

Deluxe Cutting Board Only



- LA8050** - Deluxe cutting board only no rod holders
- LA8051** - Deluxe cutting board only with white plastic rod holders

Deluxe Cutting with 32mm alloy mounts

- LA8052** - Deluxe board, 32mm alloy legs, no rod holders
- LA8053** - Deluxe board, 32mm alloy legs with white plastic rod holders



Drink holders or sinker storage



Plastic lid for cutting fish on



Plastic hinges



Trough with drain

Deluxe Cutting with 38mm stainless mounts

- LA8054** - Deluxe board, 38mm stainless legs, no rod holders
- LA8055** - Deluxe board, 38mm stainless legs with white plastic rod holders



Deluxe Cutting Board with 50mm alloy mount



- LA8056** - Deluxe board, 50mm leg no rod holders
- LA8057** - Deluxe board, 50mm leg with rod holders

